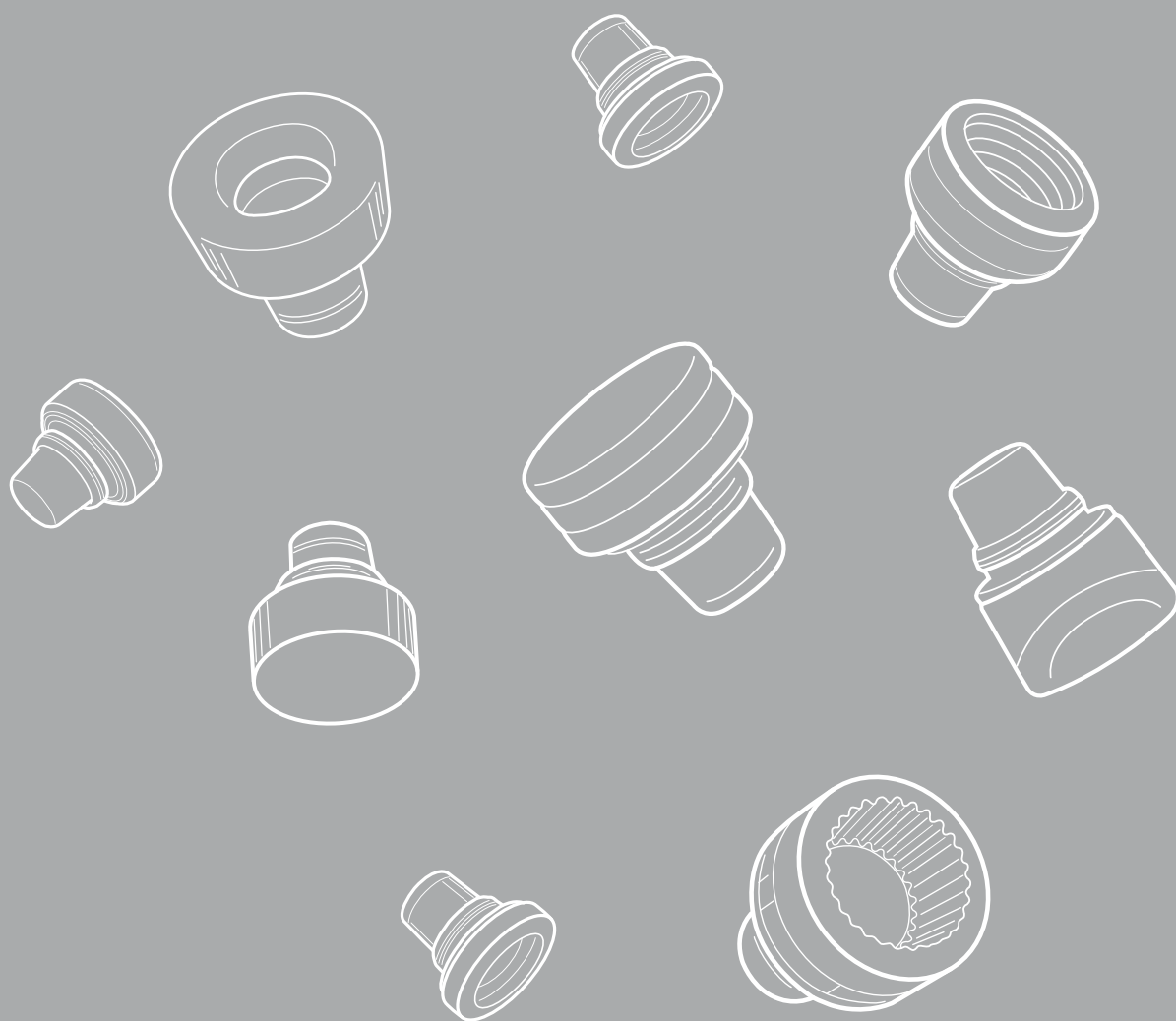


Vinolok® glass closure comes
in four main collections and offers
almost endless design options.

2025

Product

CATALOGUE



BOHEMIAN GLASS CLOSURE

Classic Collection

Shapes & Sizes

(7x29.3) = height x width of the closure head in mm

LT = Low Top, HT = High Top



VL Clear LT



VL Clear HT



VL Rosé LT



VL Black LT



VL Black HT

| Vinolok® Classic | 17.5 | 18.2 | 18.5 | 20.0 | 21.5 | 23.0 | Minimum order (pcs) | Lead time (weeks) |
|-----------------------|------|------|------|------|------|------|---------------------|-------------------|
| VL Clear LT (7x29.3) | ● | ● | ● | ● | | | 1 carton | In stock |
| VL Clear LT (7x34) | | | | | ● | ● | 1 carton | In stock |
| VL Clear LT (10x37) | | | | | ● | | 1 carton | In stock |
| VL Clear HT (12x29.3) | ● | ● | ● | ● | | | 1 carton | In stock |
| VL Clear HT (12x32) | | ● | ● | ● | | | 1 carton | In stock |
| VL Clear HT (12x34) | | | | | ● | ● | 1 carton | In stock |
| VL Clear HT (12x40) | | | | | ● | ● | 1 carton | In stock |
| VL Rosé LT (7x29.3) | ● | ● | ● | ● | | | 1 carton | In stock |
| VL Black LT (7x29.3) | ● | ● | ● | ● | | | 1 carton | In stock |
| VL Black HT (12x29.3) | ● | ● | ● | ● | | | 1 carton | In stock |
| VL Black HT (12x34) | | | | | ● | ● | 1 carton | In stock |

Vinolok® production times: The lead time indicates time of preparing the goods for shipment and does not include time for transportation. All lead times are indicative and will be confirmed upon an inquiry and/or an order confirmation depending on the current stock and available capacities. In case of combined decorations, the lead times of individual decorations must be added up to allow production to follow technological procedures of each individual decoration.

Duet Collection

Shapes & Sizes

(15x29.3) = height x width of the closure head in mm

Wood finish  Beige  Dark Brown



| Vinolok® Duet | 17.5 | 18.2 | 18.5 | 20.0 | 21.5 | 23.0 | Minimum order (pcs) | Lead time (weeks) |
|---|------|------------|------|------------|------|------|---------------------|-------------------|
| VL Clear Block (15x29.3) Beige/Dark brown | | on request | ● | on request | | | 1 carton | In stock |
| VL Clear Block (15x34) Beige/Dark brown | | | | | ● | ● | 1 carton | In stock |
| VL Clear Loop (15x29.3) Beige/Dark brown | | on request | ● | on request | | | 1 carton | In stock |
| VL Clear Loop (15x34) Beige/Dark brown | | | | | ● | ● | 1 carton | In stock |
| VL Clear Drum (15x31.5) Beige/Dark brown | | on request | ● | on request | | | 1 carton | In stock |
| VL Clear Drum (15x36) Beige/Dark brown | | | | | ● | ● | 1 carton | In stock |
| VL Clear Cone (15x33) Beige/Dark brown | | on request | ● | on request | | | 1 carton | In stock |
| VL Clear Cone (15x38) Beige/Dark brown | | | | | ● | ● | 1 carton | In stock |
| VL Clear Hover (11.5x29.3) Beige/Dark brown | | on request | ● | on request | | | 1 carton | In stock |
| VL Clear Hover (12x34) Beige/Dark brown | | | | | ● | ● | 1 carton | In stock |
| VL Clear Lake (10x34) Beige/Dark brown | | | | | ● | ● | 1 carton | In stock |
| VL Clear Echo (15x34) Beige/Dark brown | | | | | ● | ● | 1 carton | In stock |

Please take into account that wood is a natural material and certain aesthetic differences in colour and texture may occur.

Vinolok® production times: The lead time indicates time of preparing the goods for shipment and does not include time for transportation. All lead times are indicative and will be confirmed upon an inquiry and/or an order confirmation depending on the current stock and available capacities. In case of combined decorations, the lead times of individual decorations must be added up to allow production to follow technological procedures of each individual decoration.

Edge Collection

Shapes & Sizes

(15x34) = height x width of the closure head in mm



VL Clear Pool



VL Clear Loft



VL Clear Deco



VL Clear Terra



VL Clear Nest



VL Clear Soul



VL Clear Philos

| Vinolok® Edge | 17.5 | 18.2 | 18.5 | 20.0 | 21.5 | 23.0 | Minimum order (pcs) | Lead time (weeks) |
|--------------------------|------|------------|------|------------|------|------|---------------------|-------------------|
| VL Clear Pool (15x29.3) | | on request | ● | on request | | | 1 carton | In stock |
| VL Clear Pool (15x34) | | | | | ● | ● | 1 carton | In stock |
| VL Clear Loft (20x34) | | | | | ● | ● | 1 carton | In stock |
| VL Clear Deco (15x29.3) | | on request | ● | on request | | | 1 carton | In stock |
| VL Clear Deco (20x34) | | | | | ● | ● | 1 carton | In stock |
| VL Clear Terra (15x34) | | | | | ● | ● | 1 carton | In stock |
| VL Clear Nest (20x32.5) | | | | | ● | ● | 1 carton | In stock |
| VL Clear Soul (15x34) | | | | | ● | ● | 1 carton | In stock |
| VL Clear Philos (9.8x42) | | on request | ● | on request | | | 1 carton | In stock |

Vinolok® production times: The lead time indicates time of preparing the goods for shipment and does not include time for transportation. All lead times are indicative and will be confirmed upon an inquiry and/or an order confirmation depending on the current stock and available capacities. In case of combined decorations, the lead times of individual decorations must be added up to allow production to follow technological procedures of each individual decoration.

Premium Collection

Shapes & Sizes

(60x62) = height x width of the closure head in mm

Metal finish  Gold  Silver



VL Clear Aurora



VL Clear Onix



VL Clear Titus

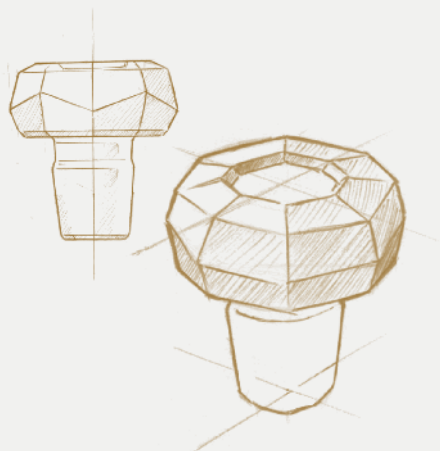
| Vinolok® Premium | 17.5 | 18.2 | 18.5 | 20.0 | 21.5 | 23.0 | Minimum order (pcs) | Lead time (weeks) |
|------------------------------------|------|------|------|------|------|------|---------------------|-------------------|
| VL Clear Aurora (16x55) | | | | | ● | ● | 1 carton | Partial stock* |
| VL Clear Onix (17x52) Gold/Silver | | | | | ● | ● | 1 carton | On request |
| VL Clear Titus (20x50) Gold/Silver | | | | | ● | ● | 1 carton | On request |

* Availability check is necessary prior to ordering. **Vinolok® production times:** The lead time indicates time of preparing the goods for shippment and does not include time for transportation. All lead times are indicative and will be confirmed upon an inquiry and/or an order confirmation depending on the current stock and available capacities. In case of combined decorations, the lead times of individual decorations must be added up to allow production to follow technological procedures of each individual decoration.

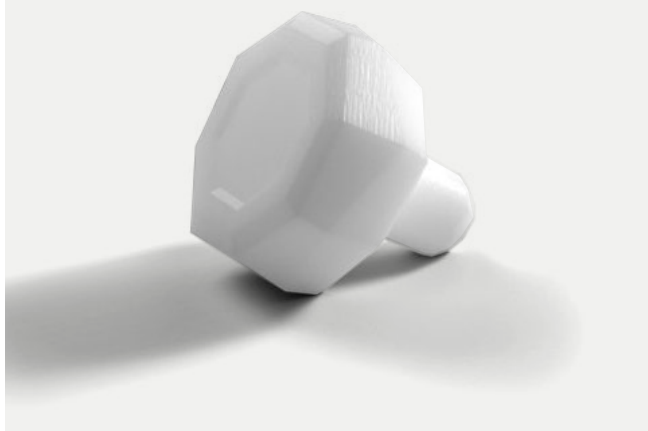
Vinolok® Ego

Vinolok® Ego are unique tailor-made glass closures that can be made according to the customer's expectations, specifications, taste or even an existing product. The key is individuality and uniqueness that underline the exclusivity of the product. To learn more about this exclusive service, please contact our sales representative.

STAGE 1 | *Concept sketch*



STAGE 2 | *3D model*



STAGE 3 | *Prototype*



Design Options

Classic Collection



Colour coating - transparent



Colour coating - opaque



Colour coating - metallic



Matt effect



Matt effect



Top printing



Side printing



Coloured sealing ring



Rhinestone cut



Crown cut



Metal coating - Gold



Metal coating - Silver



Metal coin



Metal sticker



3D sticker



Embossing

| Classic Collection Design Options | VL Clear LT (7x29.3) | VL Clear LT (7x34) | VL Clear LT (10x37) | VL Clear HT (12x29.3) | VL Clear HT (12x32) | VL Clear HT (12x34) | VL Clear HT (12x40) | VL Rosé LT (7x29.3) | VL Black LT (7x29.3) | VL Black HT (12x29.3) | VL Black HT (12x34) | Minimum order (pcs) | Lead time (weeks) |
|---|-------------------------------|-----------------------|------------------------|-------------------------------|------------------------|------------------------|------------------------|-------------------------------|-------------------------------|-------------------------------|------------------------|------------------------|----------------------|
| Available sizes | 17.5 / 18.2 18.5 / 20.0 | 21.5 / 23.0 | 21.5 | 17.5 / 18.2 18.5 / 20.0 | 18.2 18.5 / 20.0 | 21.5 / 23.0 | 21.5 / 23.0 | 17.5 / 18.2 18.5 / 20.0 | 17.5 / 18.2 18.5 / 20.0 | 17.5 / 18.2 18.5 / 20.0 | 21.5 / 23.0 | | |
| Colour coating - transparent | ● | ● | ● | ● | | ● | ● | | | | | 5 000 | 4-6 |
| Colour coating - opaque | ● | ● | ● | ● | | ● | ● | | | | | 5 000 | 4-6 |
| Colour coating - metallic | ● | ● | ● | ● | | ● | ● | | | | | 5 000 | 4-6 |
| Matt effect | ● | ● | ● | ● | | ● | ● | ● | ● | ● | ● | 5 000 | 4-6 |
| Top printing | ● | ● | | ● | ● | ● | | ● | ● | ● | ● | 5 000 | 4-6 |
| Side printing | | | | ● | ● | ● | | | | ● | ● | 5 000 | On request |
| Coloured sealing ring not available in 18.2 | ● | ● | ● | ● | ● | ● | ● | ● | ● | ● | ● | 5 000 | 4-6 |
| Rhinestone cut not available in 17.5 | | | | ● | | ● | | | | | | 1 carton | 4-8 |
| Crown cut not available in 17.5 | | | | ● | | ● | | | | | | 1 carton | 4-8 |
| Metal coating - Gold not available in 17.5 | | | | ● | | ● | | | | | | 1 carton | 4-6 |
| Metal coating - Silver not available in 17.5 | | | | ● | | ● | | | | | | 1 carton | 4-6 |
| Metal coin | ● | ● | | ● | ● | ● | | ● | ● | ● | ● | 5 000 | 6-8 |
| Metal sticker | ● | ● | ● | ● | ● | ● | ● | ● | ● | ● | ● | 5 000 | 6-8 |
| 3D sticker | ● | ● | | ● | ● | ● | | ● | ● | ● | ● | 1 carton | 4-6 |
| Embossing | ● | ● | | ● | | ● | | ● | | | | 150 000/ 100 000** | 12 |

* Valid for closures with head diameter 32 and 34 mm. ** Valid for closures with head diameter 34 mm. **Vinolok® production times:** The lead time indicates time of preparing the goods for shipment and does not include time for transportation. All lead times are indicative and will be confirmed upon an inquiry and/or an order confirmation depending on the current stock and available capacities. In case of combined decorations, the lead times of individual decorations must be added up to allow production to follow technological procedures of each individual decoration.

Design Options

Duet Collection



Top laser



Top laser



Side laser



Side laser



Top printing



Top printing



Top printing



Coloured
sealing ring



Metal sticker



Hot foil



Hot foil



Embossing



Embossing

| Duet Collection Design Options | VL Clear Block (15x29,3/34) | VL Clear Loop (15x29,3/34) | VL Clear Drum (15x31,5/36) | VL Clear Cone (15x33/38) | VL Clear Hover (11,5x29,3/ 12x34) | VL Clear Lake (10x34) | VL Clear Echo (15x34) | | |
|-----------------------------------|--------------------------------|-------------------------------|-------------------------------|-----------------------------|---|--------------------------|--------------------------|------------------------|----------------------|
| Available sizes | 18,5 / 21,5 23,0 | 18,5 / 21,5 23,0 | 18,5 / 21,5 23,0 | 18,5 / 21,5 23,0 | 18,5 / 21,5 23,0 | 21,5 / 23,0 | 21,5 / 23,0 | Minimum order (pcs) | Lead time (weeks) |
| Top laser | ● | ● | ● | ● | ● | | ● | 5 000 | On request |
| Side laser | ● | ● | ● | ● | | | | 5 000 | On request |
| Top printing | ● | | | | ● | ● | ● | 5 000 | 4-6 |
| Coloured sealing ring | ● | ● | ● | ● | ● | ● | ● | 5 000 | 4-6 |
| Metal sticker | | | | | | ● | | 5 000 | 6-8 |
| Hot foil | ● | | | | ● | | ● | 5 000 | On request |
| Embossing | ● | | | | ● | | ● | 5 000 | On request |

Please take into account that wood is a natural material and certain aesthetic differences in colour and texture may occur.

Vinolok® production times: The lead time indicates time of preparing the goods for shippment and does not include time for transportation. All lead times are indicative and will be confirmed upon an inquiry and/or an order confirmation depending on the current stock and available capacities. In case of combined decorations, the lead times of individual decorations must be added up to allow production to follow technological procedures of each individual decoration.

Design Options

Edge Collection



Inner colour coating
- transparent



Inner matt effect



Side printing
- gold paste



Side printing
- colour



Coloured sealing ring



Full metal coating
- Gold



Full metal coating
- Silver



Inner metal coating
- Gold



Inner metal coating
- Silver



Metal sticker



Zamac tumbler
- Gold



Zamac tumbler
- Silver



Zamac tumbler
- Copper

Edge Collection Design Options

| | VL Clear Pool (15x29,3) | VL Clear Pool (15x34) | VL Clear Loft (20x34) | VL Clear Deco (15x29,3) | VL Clear Deco (20x34) | VL Clear Terra (15x34) | VL Clear Nest (20x32,5) | VL Clear Soul (15x34) | VL 18,5 Clear Philos (10x42) | | |
|----------------------------------|----------------------------|--------------------------|--------------------------|----------------------------|--------------------------|---------------------------|----------------------------|--------------------------|---------------------------------|------------------------|----------------------|
| Available sizes | 18.5 | 21.5 / 23.0 | 21.5 / 23.0 | 18.5 | 21.5 / 23.0 | 21.5 / 23.0 | 21.5 / 23.0 | 21.5 / 23.0 | 18.5 | Minimum order (pcs) | Lead time (weeks) |
| Inner colour coating transparent | | ● | ● | | ● | ● | ● | ● | | 5 000 | 4-6 |
| Inner matt effect | | ● | ● | | ● | ● | ● | ● | | 5 000 | 4-6 |
| Top printing | | | | | | | | | | 5 000 | 4-6 |
| Side printing - gold paste | ● | ● | ● | ● | ● | ● | ● | | | 5 000 | Onrequest |
| Side printing - colour | ● | ● | ● | ● | ● | ● | ● | | | 5 000 | Onrequest |
| Coloured sealing ring | ● | ● | ● | ● | ● | ● | ● | ● | ● | 5 000 | 4-6 |
| Full metal coating - Gold | | ● | ● | ● | ● | ● | ● | ● | ● | 15 000 | 4-6 |
| Full metal coating - Silver | | ● | ● | ● | ● | ● | ● | ● | ● | 15 000 | 4-6 |
| Inner metal coating - Gold | | ● | ● | ● | ● | ● | | ● | | 15 000 | 4-6 |
| Inner metal coating - Silver | | ● | ● | ● | ● | ● | | ● | | 15 000 | 4-6 |
| Metal sticker | | ● | ● | | ● | | | | ● | 5 000 | 6-8 |
| Zamac tumbler - Gold | | | ● | | | | | | | 3 000 | 16-18 |
| Zamac tumbler - Silver | | | ● | | | | | | | 3 000 | 16-18 |
| Zamac tumbler - Copper | | | ● | | | | | | | 3 000 | 16-18 |

Vinolok® production times: The lead time indicates time of preparing the goods for shipment and does not include time for transportation. All lead times are indicative and will be confirmed upon an inquiry and/or an order confirmation depending on the current stock and available capacities. In case of combined decorations, the lead times of individual decorations must be added up to allow production to follow technological procedures of each individual decoration.

For more information, contact
the Vinolok® sales team.



VINOLOK.COM